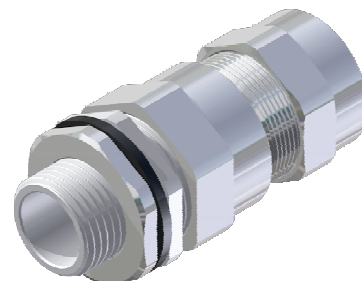
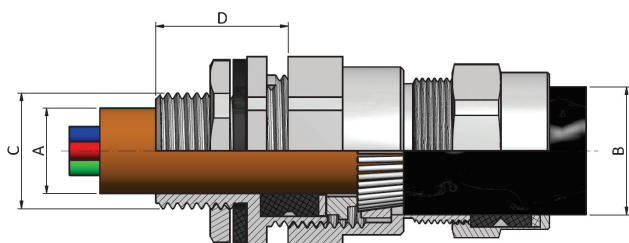




**CABTEK**  
electrical accessories

### Double Compression Flameproof/Weatherproof Cable Gland

<b>Size</b>	: 16mm to 88mm & 1/2" to 4"	<b>Code of Protection</b>	: Ex d IIB/IIC GB
<b>Standard</b>	: EN EC 60079-0: 2018, EN / IEC 60079-1: 2014 & EN / IEC 60079-31: 2014/2013	<b>Material</b>	: Brass CW614N, Nickel Plated Brass, SS316L
<b>Application</b>	: For indoor & outdoor hazardous area use with all types of SWA/STA cable providing flameproof seal on cable inner sheath and environmental seal on cable outer sheaths. Also provides mechanical retention & electrical continuity via armour wire termination.	<b>Thread</b>	: Metric, NPT, ET
<b>Ingress Protection</b>	: IP67	<b>Operating Temp.</b>	: -20°C to +110°C
<b>CIMFR Certificate No.</b>	: CMF 19 INEx 0033	<b>Cable Type</b>	: Single Wire Armour (SWA) Cable, Steel Tape Armour (STA)
<b>PESO Certificate No.</b>	: P462800/2	<b>Features</b>	: Compression Seal and Armored Ring
		<b>Seal Material</b>	: Neoprene Seal and Nylon Washer
		<b>Standard Accessories</b>	: IP Washer (Thread Seal)
		<b>Optional Accessories</b>	: Shroud, Lock Nut, Earth Tag, Serrated Washer, Ingress Disc



### Gland Selection Chart

Gland Size	Indian Gland Equivalent Size	Entry Thread "C"			Optional Thread		Thread Length "D"	Cable Dia. "A"		Cable Dia. "B"		Armour Wire Dia.	A/F	A/C
		Metric	ET	NPT	Metric	ET		Min.	Max.	Min.	Max.			
16	01SS	M16	5/8"	3/8"	M20	3/4"	15	4.00	8.60	6.60	13.10	0.80-1.40	20.00	22.00
20S	01S	M20	3/4"	1/2"	M25	1"	15	5.50	11.70	10.20	15.90	0.80-1.40	22.00	24.20
20	01, 02	M20	3/4"	1/2"	M25	1"	15	6.50	13.90	15.00	21.00	0.80-1.40	27.00	29.20
25	03, 04	M25	1"	3/4"	M32	1 1/4"	15	10.00	19.90	19.90	26.20	0.80-1.40	35.00	38.00
32	05, 06	M32	1 1/4"	1"	M40	1 1/2"	15	14.00	26.20	26.00	33.00	0.80-1.40	41.00	45.00
40	07, 08	M40	1 1/2"	1 1/4"	M50	2"	15	23.60	32.10	31.50	40.00	0.80-1.40	47.50	52.00
50S	09	M50	2"	1 1/2"	M63	2 1/2"	15	31.50	38.20	37.00	46.00	0.80-1.40	56.50	61.50
50	010	M50	2"	2"	M63	2 1/2"	15	34.00	44.00	45.00	52.00	0.80-1.40	60.50	65.50
63S	011S, 11	M63	2 1/2"	2"	M75	3"	15	41.00	50.00	50.00	59.00	0.80-1.40	68.00	73.00
63	012	M63	2 1/2"	2 1/2"	M75	3"	15	46.50	56.00	59.00	65.00	0.80-1.40	75.00	80.00
75S	013A	M75	3"	3"	M88	3 1/4"	15	53.00	62.00	64.00	72.00	0.80-1.40	83.50	89.00
75	013	M75	3 1/4"	3 1/2"	M88	3 1/2"	15	59.00	68.00	70.00	78.40	0.80-1.40	89.00	93.00
88	014	M88	3 1/2"	4"	M100	4"	15	69.00	79.00	78.00	86.00	0.80-1.40	100.00	110.00

Dimensions are in mm

### Product Code for Ordering Purpose

Size	Type	Material	Thread Type "C"	Shroud Type	Accessories
20s	CDCF	Brass -1	Standard Metric-11	PVC Shroud-PS	Lock Nut-5
		Stainless Steel -2	Standard NPT-12	LSF Shroud-LS	IP Washer-6
		Nickel Plated -3	Standard ET-13	LSOH Shroud-SL	Serrated Washer-7
		Optional Metric-16	PCP Shroud-PC	Ingress Disc-8	
		Optional ET-18	Earth Tag-9		

### Ordering Information

**Code:** 20sCDCF311PS569  
CDCF-20s Nickel Plated Cable Gland Kit

20s=Gland Size, CDCF=Gland Type, 3= With Nickel Plated Material, 11=With Standard Metric Thread, PS= With PVC Shroud, 5=With Lock Nut, 6=With IP Washer, 9=With Earthing Tag