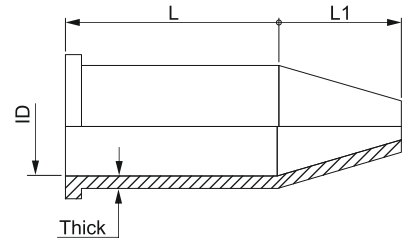


PCP & LSOH Shroud

- Polychloroprene is a family of synthetic rubbers that are produced by polymerization of chloroprene. Polychloroprene (PCP) was one of the first commercially available synthetic rubbers and is an exceptionally tough and flexible sheathing material with resistance to tears, abrasions, impact, crushing and chipping.
- PCP has a broad temperature range and doesn't become brittle even at temperatures as -40°C / $+120^{\circ}\text{C}$. It has very good resistance to swelling and to a wide range of chemicals including both natural oils and aliphatic hydrocarbons, making it particularly useful as a sheathing material for applications such as trailing cables and dredge cables used in mining industry and the oil & gas industries. It is also resistant to a range of solvents, acids and alkalis, mildew, fungus and many other biological agents, making it ideal for use in chemical plants. As a sheathing material it provides the cable with superior weathering resistance and has proven to have excellent ageing properties in permanent outdoor applications. PCP also has very good fire resistant properties.



SHROUD FOR A2F CABLE GLAND

Size	PCP Code	LSOH Code	ID	L	L1	Thick
20s	CPCA2F20S	CSLA2F20S	23.00	35.00	45.00	1.50
20	CPCA2F20L	CSLA2F20L	27.00	35.00	45.00	1.50
25s	CPCA2F25S	CSLA2F25S	38.00	40.00	55.00	1.50
25	CPCA2F25L	CSLA2F25L	38.00	40.00	55.00	1.50
32	CPCA2F32L	CSLA2F32L	43.00	50.00	55.00	1.50
40	CPCA2F40L	CSLA2F40L	53.00	55.00	55.00	1.50
50s	CPCA2F50S	CSLA2F50S	58.00	55.00	65.00	1.50
50	CPCA2F50L	CSLA2F50L	64.00	60.00	70.00	1.50
63s	CPCA2F63S	CSLA2F63S	74.00	60.00	70.00	1.50
63	CPCA2F63L	CSLA2F63L	79.00	70.00	70.00	1.50
75s	CPCA2F75S	CSLA2F75S	88.00	75.00	70.00	1.50
75	CPCA2F75L	CSLA2F75L	95.00	75.00	80.00	1.50
90	CPCA2F90L	CSLA2F90L	113.00	85.00	110.00	1.50

SHROUD FOR E1FW CABLE GLAND

20s	CPCE1FW20S	CSLE1FW20S	25.00	60.00	30.00	1.50
20	CPCE1FW20L	CSLE1FW20L	32.00	65.00	30.00	1.50
25s	CPCE1FW25S	CSLE1FW25S	38.00	72.00	35.00	1.50
25	CPCE1FW25L	CSLE1FW25L	38.00	72.00	35.00	1.50
32	CPCE1FW32L	CSLE1FW32L	48.00	76.00	40.00	1.50
40	CPCE1FW40L	CSLE1FW40L	58.00	75.00	85.00	1.50
50s	CPCE1FW50S	CSLE1FW50S	63.00	85.00	85.00	1.50
50	CPCE1FW50L	CSLE1FW50L	71.00	85.00	85.00	1.50
63s	CPCE1FW63S	CSLE1FW63S	82.00	100.00	90.00	1.50
63	CPCE1FW63L	CSLE1FW63L	82.00	100.00	90.00	1.50
75s	CPCE1FW75S	CSLE1FW75S	95.00	110.00	110.00	1.50
75	CPCE1FW75L	CSLE1FW75L	106.00	110.00	120.00	1.50
90	CPCE1FW90L	CSLE1FW90L	118.00	110.00	120.00	1.50

LSOH MATERIAL PROPERTIES

Grade	Halogen Free
Colour	Black Red Orange & White
Hardness (IRHD)	65 m- 70 Shore A
Modulus Mpa	No Data Available
Tensile Strength Mpa	7 Min
Tear Strength	23 n/m
Elongation @ Break %	400 Min
High Temp use (Con)	+250°C
High Temp use (Peak)	+275°C
Low Temp Flexibility	-60°C
Oxygen Index	32.00
UL Rating	Not Tested
Smoke Evolution	Low Smoke Ao<0.029
Food Quality	No
Medical	No
Oil Resistant	Fair
Dielectric Strength	High
Ozone Resistance	Excellent
Halogen Content	<0.5

PCP MATERIAL PROPERTIES

Temp. Range, °C	-0.35
Compression Set	Fair/Good
Strength Properties	Good
Low Temp. Prop.	Good
Abrasion Resist.	Good
Gas Permeability	Good
Weather Resist.	Good
Water Resistance	Fair
Ozone Resistance	Good
Mineral Oil Resist.	Good
Chemical Resist.	Fair
Flame Resistance	Excellent
Heat Resistance	Good